

SAGE ALERTING SYSTEMS

Adding the NPT event to a Sage Digital ENDEC model 3644

This document describes the process of adding the National Periodic Test code to your ENDEC. The filter will be set to air the event immediately, and will use your existing local area definition to determine the alerting area.

Although the FCC has proposed an “all of United States” code, they have not yet made a final rule making, and the Sage ENDEC does not yet support that proposed code. This procedure will work for county, state-wide, and for multi-state alerts (subject to the FCC limitation of 31 location codes per alert).

Required Software Version

This procedure will work for any version of the Sage Digital ENDEC, however, the minimum version number needed to work with IPAWS is 89.6 CR Rev 2.

To determine your software revision level, access the ENDEC’s web page and click the version button. You will see

Board Rev x/nn

where nn is the version number. Check for version 89.6 or greater. At the bottom of the version information, check for CR Rev 2. If you don’t have both of these indications, go to the Sage web page at www.sagealertingsystems.com; on the left of the page, click support, then firmware updates and follow the instructions.

Adding NPT to your filters

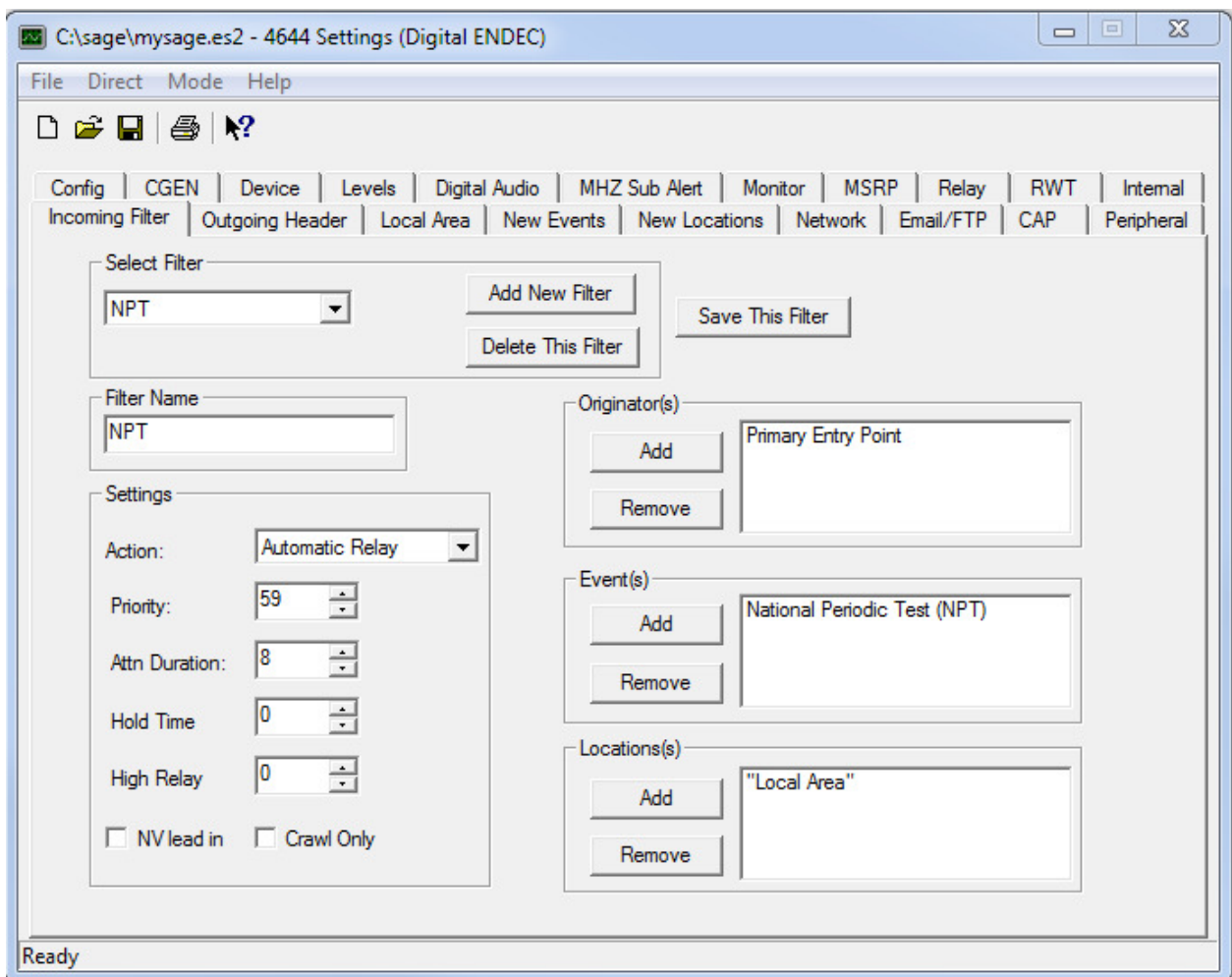
The instructions below assume that you have a copy of the Sage settings editor program, ENDECSetD, on your computer, and that you know your ENDEC’s IP address. If you don’t, or if you are unfamiliar with the process of modifying ENDEC settings, you can read the basic setup instructions at <http://www.sagealertingsystems.com/faq.htm> and review the Setup and the Filters Task sheets.

If you are unable to perform any of the steps, contact Sage technical support for assistance.

You will need to perform the following steps:

- 1) Download your ENDEC's settings file. On the ENDEC's web page, click "Retrieve Settings" on the left side of the page, and again on the top center of the new page that opens. Save the file in a file folder that you can find again later.
- 2) Edit the file to add the NPT event. You can start ENDECSetD and open your file, or you can use windows explorer to navigate to the folder you saved the file in and double click the file to start ENDECSetD. Refer to <http://www.sagealertingsystems.com/task/SageFilters.pdf> for general information on adding filters.
- 3) You will need to add a filter for NPT. Click the Incoming Filter tab, then click Add New Filter. Use any name you like on the new filter name popup and click ok.

Change the fields from their defaults to the settings below. This assumes that you have your local area set for your local county or counties. The NPT will be sent to "all of [your state]". If your local area includes any counties in the target state, then the filter will match. Do not add "all of state" to the filter location, or to the local area.

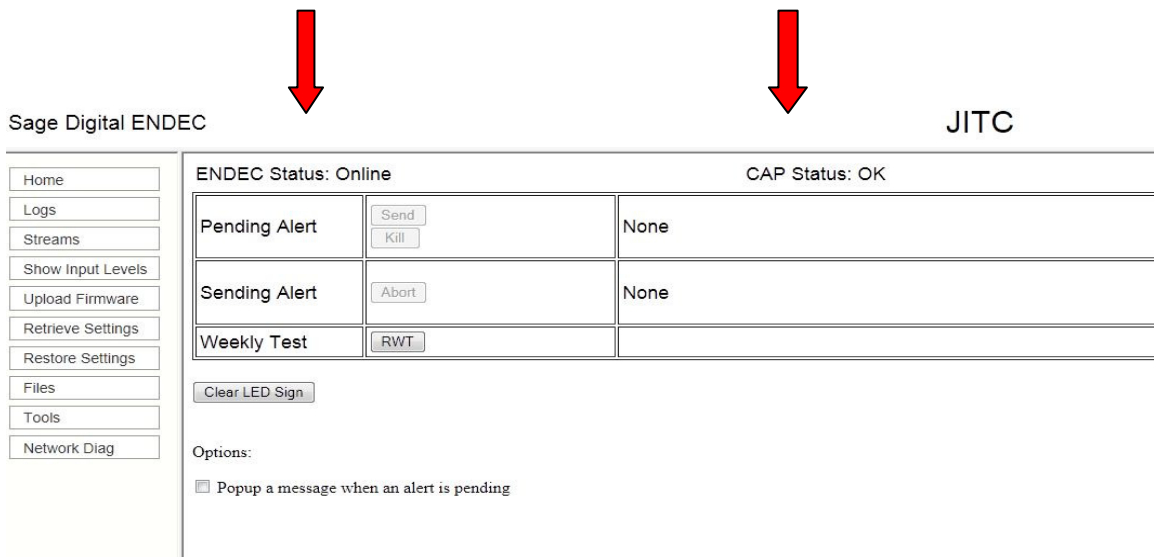


Click "Save This Filter"

Click File, then Save As, and save the file under a new name, replacing “*.es2” with your new file name.

- 4) Upload the settings file. On the ENDEC’s web page, click restore settings from the buttons on the left. Navigate to the saved folder and file, select it, and upload the file. The ENDEC will reboot with your new settings.

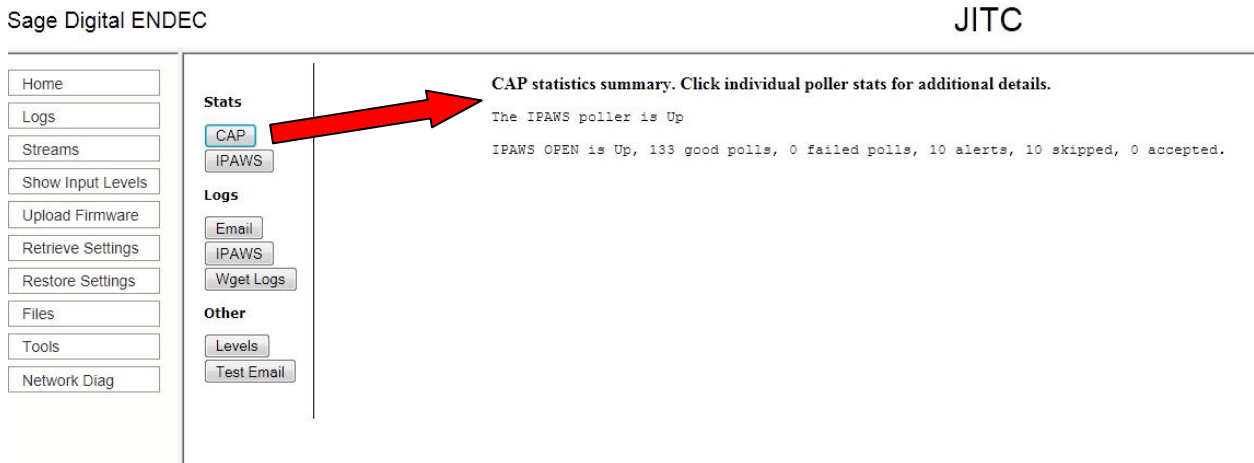
Adding the NPT will not change your CAP monitoring status. You should already be receiving the weekly FEMA RWT alerts. You can check the ENDEC’s log and make sure you are receiving CAP weekly tests at 11:00am local time. You can also verify that the ENDEC is polling CAP servers by checking the CAP status. At least one minute after the ENDEC has restarted, it will begin showing the CAP station at the top of its home page. You need to see both ENDEC Online and CAP Status OK



The screenshot shows the Sage Digital ENDEC web interface. At the top, there are two red arrows pointing down to the text 'Sage Digital ENDEC' and 'JITC'. The interface has a left sidebar with buttons: Home, Logs, Streams, Show Input Levels, Upload Firmware, Retrieve Settings, Restore Settings, Files, Tools, and Network Diag. The main content area shows 'ENDEC Status: Online' and 'CAP Status: OK'. Below this is a table with three rows: 'Pending Alert' with 'Send' and 'Kill' buttons, 'Sending Alert' with an 'Abort' button, and 'Weekly Test' with an 'RWT' button. There is also a 'Clear LED Sign' button and an 'Options' section with a checkbox for 'Popup a message when an alert is pending'.

You can make sure the ENDEC is polling the FEMA IPAWS-OPEN server with the tools button:

- Click the **Tools** button



The screenshot shows the Sage Digital ENDEC web interface with the 'Tools' button highlighted. A red arrow points from the 'CAP' button in the 'Stats' section to the 'CAP statistics summary' text. The 'Stats' section includes buttons for CAP, IPAWS, Email, IPAWS, Wget Logs, Levels, and Test Email. The 'CAP statistics summary' text reads: 'CAP statistics summary. Click individual poller stats for additional details. The IPAWS poller is Up. IPAWS OPEN is Up, 133 good polls, 0 failed polls, 10 alerts, 10 skipped, 0 accepted.'