



Based on EASyCAP Cable v. 2.1

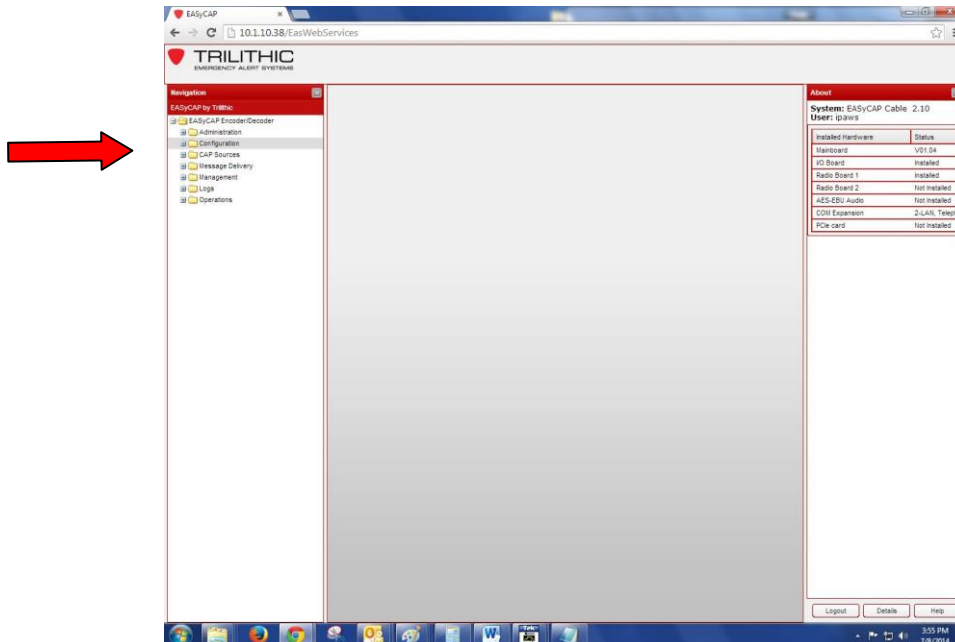
Please Note: The following instructions are prepared under the assumption that the EAS participant is not performing initial setup and is familiar with configuring Trilithic products.

Obtain IP address (DHCP or static) from the front panel and enter it into an internet browser.

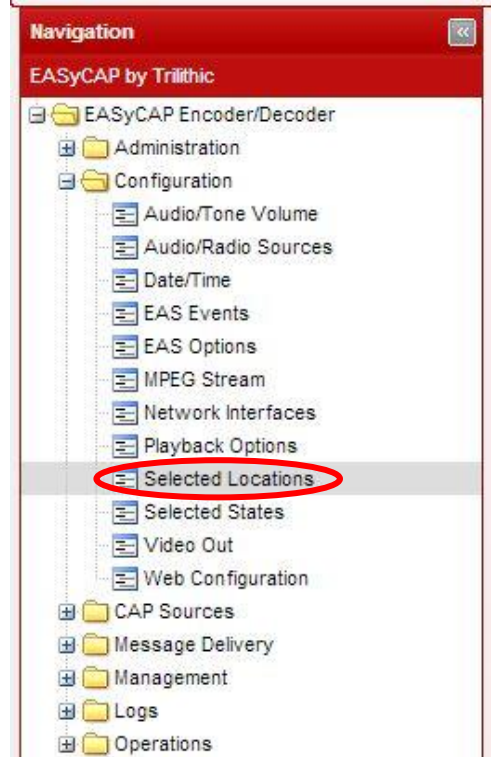
Enter the user name and password.

A screenshot of the EASyCAP Login dialog box. It has a red border and a title bar that says "EASyCAP Login". Inside, there are two input fields: "UserName:" with the text "Administrator" and "Password:" with five dots. A "LOGIN" button is located at the bottom right of the dialog.

On the left side of the screen select the **Configuration** folder.

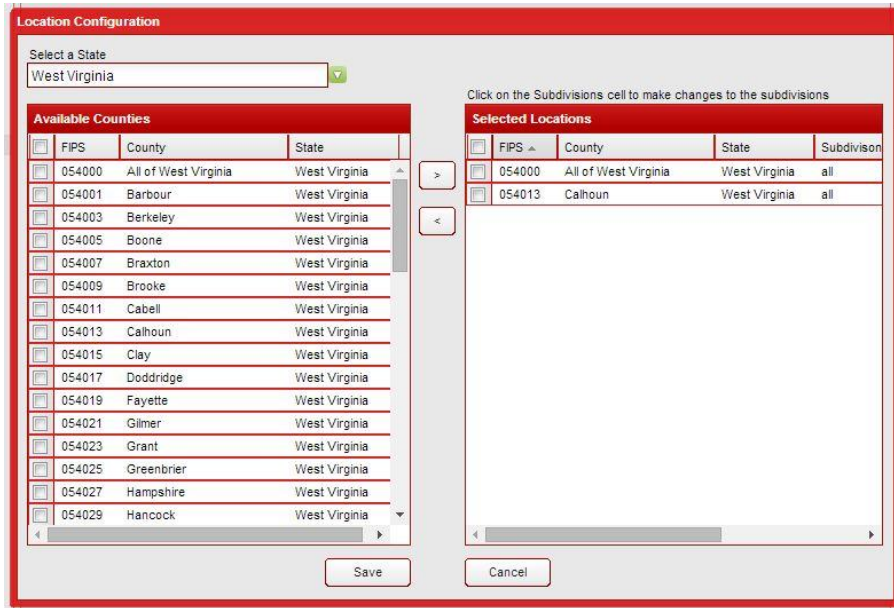


Select **Selected Locations**.

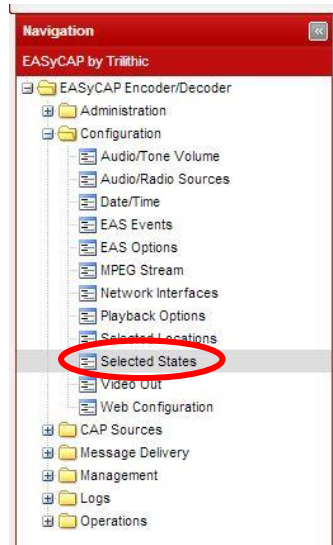


Select your state from dropdown screen

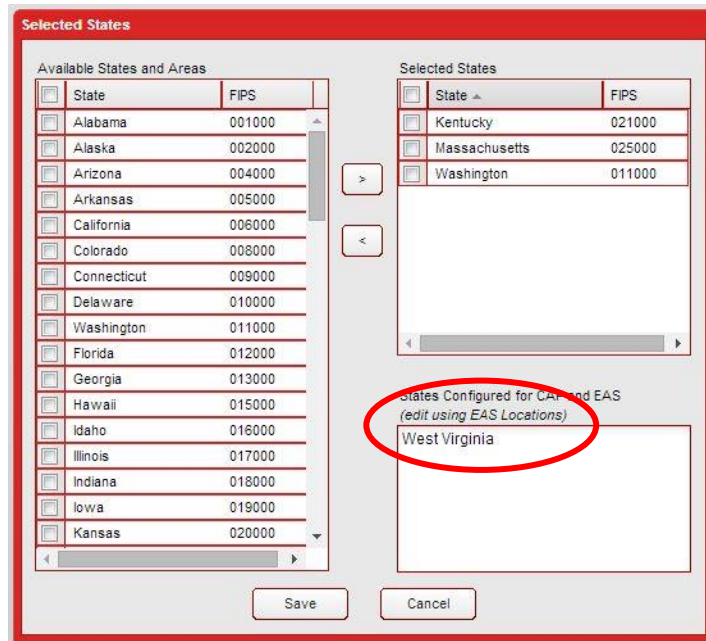
- Click the > arrow to move state to the right.
- Click Save.



Click **Selected States**.

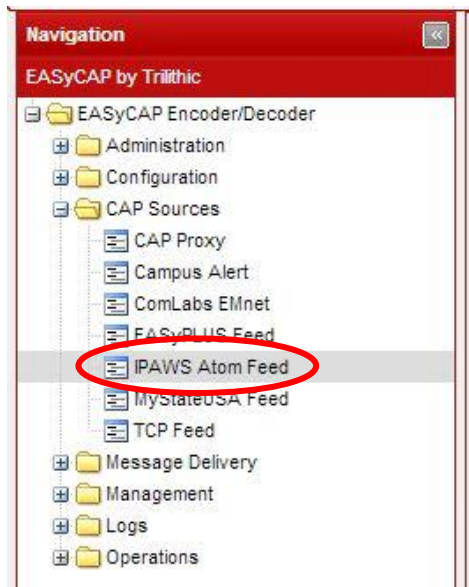


Ensure your **State-All code** is selected (the US-All 000000 location code is not available at this time).



Click Save.

Select the **CAP Sources** folder, select **IPAWS Atom Feed**.



If **monitoring the default IPAWS OPEN Atom Feed**, leave the URL field blank (default feed: <https://www.apps.fema.gov>).

**IpaWS Atom Feed**

Atom Feed  
FEMA IPAWS Add Delete

Use All Area Blocks

Description  
FEMA IPAWS

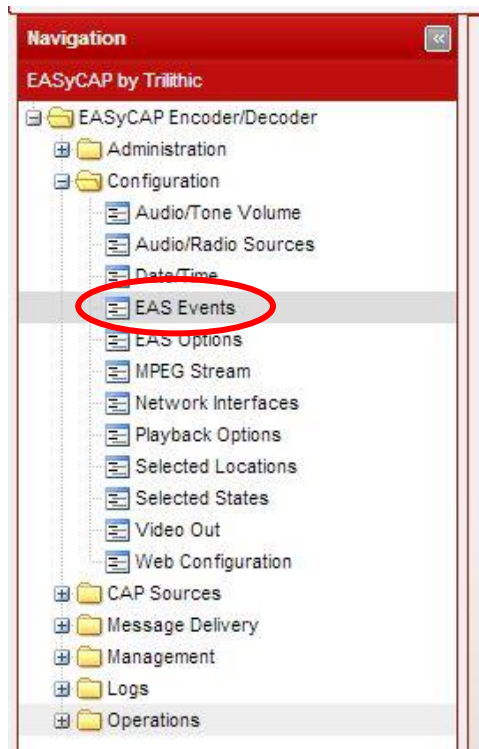
URL (leave blank to use the default IPAWS Atom Feed)  
|

Username (blank for default) Password/PIN (blank for default) Confirm Password/PIN

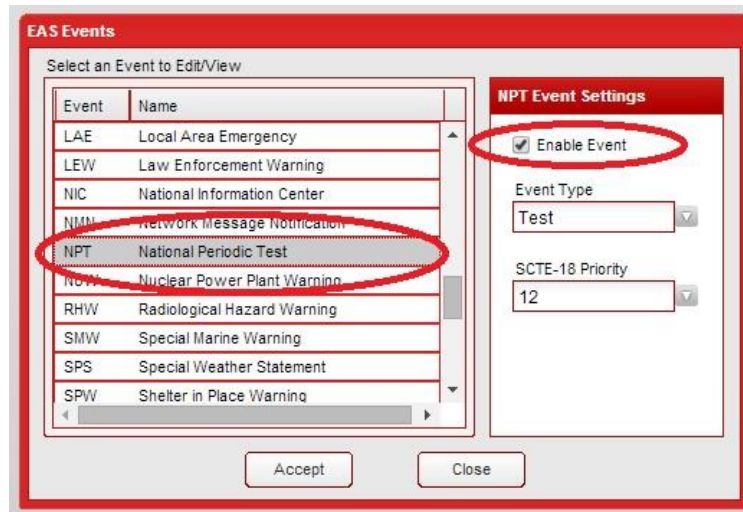
Signature Verification Do Not Verify Signatures Station ID FEMA\_IPA Polling Interval 30 seconds

Accept Cancel

Select the **Configuration** folder, select **EAS Events**.



Highlight event code **National Periodic Test** and click Enable.  
Click **Accept**.



EASyCAP manual can be found at:

<http://vault.trilithic.com/eas/documents/manuals/EASyCAP Encoder-Decoder Manual v2-10.pdf>